

# SAVE MILLIONS OF DOLLARS BY DEPLOYING REUSABLE TECHNOLOGY AND REDUCE YOUR ENVIRONMENTAL FOOTPRINT

## REPLACE TROPICAL FRUIT PAPER BOXES WITH LONG-LIFE, REUSABLE, ONE-TOUCH MERCHANDISING SHIPPER DISPLAYS BY TECHNOLOGY CONTAINER CORP. (TCC)

More sustainable than paper boxes reduces green house gases, solid waste, energy consumption associated with one-way paper boxes by approximately 60% or more.

### BETTER PRODUCT PROTECTION:

bananas ship crown up for protection and are easily flipped for crown down display



### EASY TO TRANSPORT:

interlocking feet support nesting plastic trays for more secure shipment



### EASY TO SET UP:

minimal labor required



\*Patent pending



### GREENER TECHNOLOGY

Eliminate costly corrugated paper boxes with TCC's reusable shipper/display.

### STRONG

TCC's corrugated plastic boxes are impervious to moisture or humidity. They do not lose their stacking strength or integrity when exposed to the harsh demands of getting tropical fruit to market. We can tailor the size, and strength of our boxes to your packing requirements.

### REDUCE STORE LABOR

TCC's One-Touch Merchandising reduce labor costs for retailers by eliminating the labor associated with de-boxing product. Simply cut the straps and remove the top tray and sleeve. Product is displayed, ready for sale. No handling by employees.

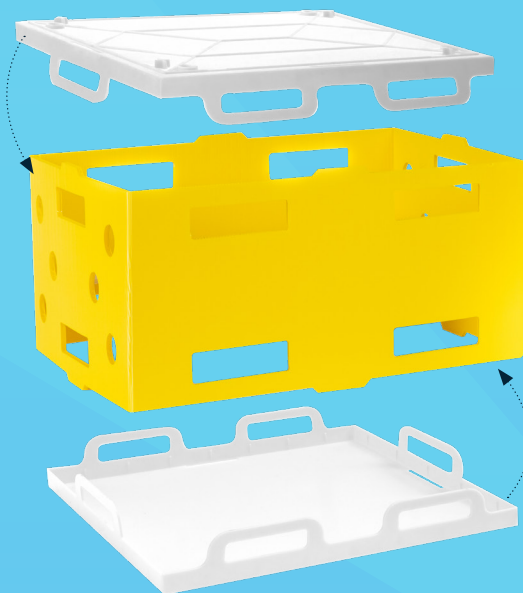
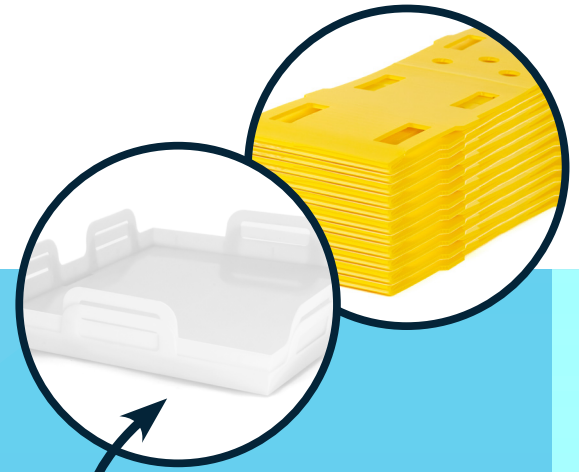
### WASHABLE

After the boxes empty, they can be returned to the plantations and sanitized prior to reuse.

### RFID TRACKING

Inventory can be tracked via RFID technology for easy, passive accounting of assets.

Empty plastic sleeves and trays can nest on pallets and are secured by interlocking feet



Top tray & sleeve lift off for attractive presentation of produce

**FOR MORE INFORMATION AND SOLUTIONS TO YOUR TROPICAL FRUIT MARKET NEEDS, CONTACT US TODAY!**

CALL 1-972-228-1617 OR VISIT [TECHCONTAINER.COM/PRODUCTS/TROPICAL-FRUIT-BOXES/](http://TECHCONTAINER.COM/PRODUCTS/TROPICAL-FRUIT-BOXES/)